

# A Shipful of Painters Extravaganza – Sept 12-19, 2025

‡Featuring 6 Master Painter Tour Leaders

Brienne Brown, Dan Marshall, Grahame Booth, Keiko Tanabe, Ron Stocke, and Randy Hale

**Thank you** for your inquiry about this unique painting holiday and trip of a lifetime! It includes 8 days and nights on the Danube – from Budapest to Bavaria – with stops each day to go ashore and either take guided tours with interpreters or paint an infinite variety of subjects. We have something for both painters and non-painting travel companions.

## TRAVEL IN STYLE

The cuisine is 5-star caliber and each day brings new marvels! Wines and beers from the region flow freely, included with your meals. Your first class accommodations travel with you, including daily housekeeping so everything is always neat and tidy for you. And just think, we traverse four countries but no need to pack or unpack – your room travels with you.

## CAMMERADERIE

You'll get to meet and become friends with painters from all over the world, as well as getting to spend time with some of your favorite master painters. We'll be having conversational panel discussions after dinner where you can ask questions of our leaders. They'll be doing demos mornings and afternoons throughout the cruise, so painters can sign up to watch a particular Leader at an appointed time and location. Should you wish to take a break from painting and participate in any of the many shore excursions offered, you can!

## RIVER CRUISE SHIPS

This is a chartered route, especially for us – so there are no other groups on board. Our ship is the newest in the Amadeus line, **The Amadeus NOVA**. It's being launched and christened this June and includes all of the most up-to-date amenities. River cruise ships are built to certain size constraints dictated by the locks up and down all the European waterways. They're not too long or wide, nor are they tall – only three decks in height. The front third of the ship is dedicated to food prep, dining, and entertainment. The remaining 2/3's of the ship is where you'll find the staterooms. Main and Upper Deck staterooms all have window walls that retract so you feel as though you are on a veranda watching countryside glide by. The upper deck has suites and larger staterooms. The main deck has the largest number of cabins, while the lower deck has a smaller quantity of cabins to choose from. Above everything is the sundeck with shade canopies, lounge chairs, a fleet of touring bicycles, a putting green, and a sundeck lounge – all offering excellent viewing while underway. The pilot house on the sun deck actually retracts into the ship for tight clearances when the ship comes to bridges it must pass beneath.

If this sounds like an amazing once in a lifetime opportunity – it is! A \$500 deposit reserves your spot. You get to choose your cabin but lock it in early with a deposit because this will sell out fast. Final payments aren't due until next year. If this sounds like heaven, let your Tour Leader put you in touch with Amadeus. They will get you connected via a secure link and get your cabin of choice. Come be part of this amazing adventure.

## A SHIPFUL of PAINTERS EXTRAVAGANZA – Sept 12-19, 2025

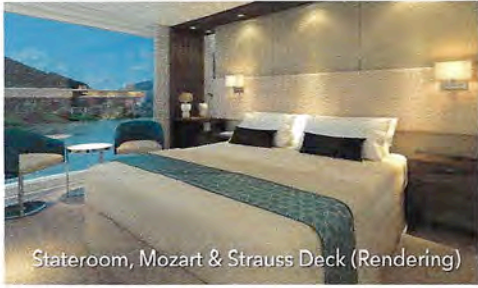
### Amadeus NOVA, from Budapest to Passau

ITINER/-

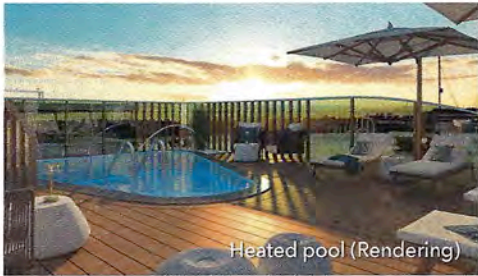
Ports and timings are subject to change (locks, currents)

DAY	LOCATION	Arriving	Departing	HIGHLIGHTS
1	BUDAPEST			Embarkation from 4 pm Welcome Cocktail Welcome Dinner Evening cruise Budapest with folklore show on board
2	BUDAPEST		1:30 PM	Budapest - capital of Hungary Szentendre, Visegrad Castle and Esztergom with Basilica
	ESZTERGOM	6:30 PM	8:00 PM	Leisure time; rejoin ship
3	BRATISLAVA	8:00 AM	11:00 PM	Bratislava - Beauty on the Danube Visit the Schloss Hof Palace and Estate
4	VIENNA	7:00 AM	Midnight	Vienna - Imperial discovery tour Visit to Schonbrunn Palace "Sound of Vienna" classical concert, with champagne
5	DURNSTEIN EMMERSDORF	8:00 AM 3:00 PM	12 NOON 7:00 PM	Durnstein walking tour with wine tasting Excursion to Melk Abbey
6	LINZ	7:00 AM	Midnight	Full-day Salzburg with Salzkammergut and lunch Linz walking tour with Linzer Torte tasting Trip to Poestlingsberg
7	PASSAU	8:00 AM		Passau historic walking tour Veste Obdrhaus with visit to the museum Bavarian evening with regional specialties and local music
8	PASSAU		9:00 AM	Disembarkation after breakfast

# NEW: AMADEUS NOVA



Stateroom, Mozart & Strauss Deck (Rendering)



Heated pool (Rendering)



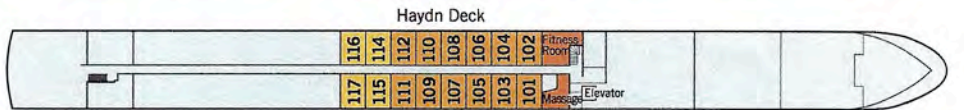
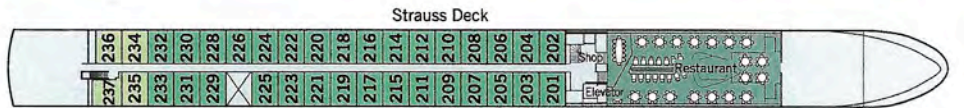
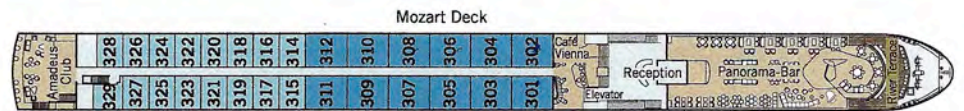
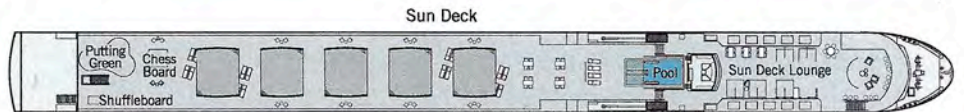
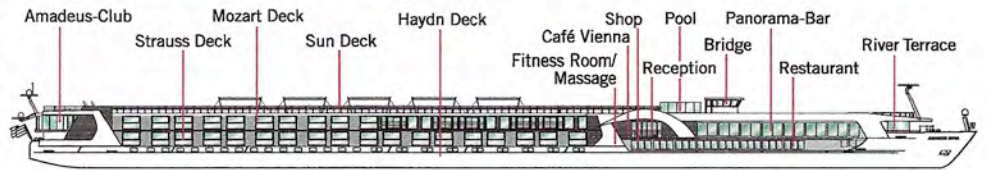
Rendering

## ONBOARD FACILITIES

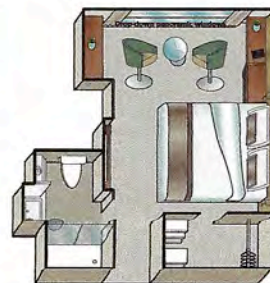
- Panorama-Restaurant
- Panorama-Bar and Lounge
- Amadeus-Club
- "Café Vienna" with Viennese coffee specialities
- Outdoor glass-shielded "River Terrace"
- Heated pool
- Sun Deck with Sun Deck Lounge, lounge chairs, shade awnings, Golf Putting Green, giant Chess Board and Shuffleboard
- Fitness Room, Massage Room
- Gift Shop, Laundry Service
- Complimentary bicycles on board
- Wi-Fi available
- Elevator

## STATEROOM AMENITIES

- Suites (26,4 m<sup>2</sup>/284 sq.ft.) with comfortable corner sofa, luxurious bathroom and walk-out exterior balcony
- Staterooms (17,5 m<sup>2</sup>/188 sq.ft.) on Strauss and Mozart Deck with drop-down panoramic windows
- Staterooms (16 m<sup>2</sup>/172 sq.ft.) on Haydn Deck with smaller panoramic windows (cannot be opened)
- Mini-Bar (all staterooms except categories C-1 and C-4)
- Walk-in wardrobe
- Choice of bed configuration: double or twin bed
- Flat-screen television
- Individual climate control
- Bathrooms with walk-in shower
- Bathrobes in Suites
- Hair dryer
- Direct dial telephone
- In-room safe



Suite



Stateroom, Mozart and Strauss Deck

## TECHNICAL DATA

- Built: 2024
- Register: Germany
- Length: 135 m | 443 feet
- Width: 11,4 m | 37,5 feet
- Height above water: 6 m | 19,8 feet
- Speed: 25 km/h | 15,5 mph
- Decks: 4
- Staterooms/Suites: 67/12
- Max. passengers: 158
- Crew members: approx. 46

# PRICING MATRIX

## A Shipful of Painters Extravaganza River Cruise

Budepest, Hungary - to - Passau, GR

September 12-19,2025

All pricing is per person, based on double-occupance of stateroom cabins  
*Should you wish to travel alone and have cabin to yourself, there is a sgl-supplement upcharge*

Stateroom Category	Cabin Class	Price per person (dbl-occupancy)	Single-Supplement Upcharge	
			%	Amount
Mozart Suite	Suite	\$ 4,954.00	100%	\$ 4,954.00
Mozart Deck	A-1	\$ 4,245.00	60%	\$ 2,547.00
Strauss Deck	B-1	\$ 3,884.00	50%	\$ 1,942.00
Strauss Deck	B-4	\$ 3,592.00	30%	\$ 1,077.60
Haydn Deck	C-1	\$ 3,127.00	15%	\$ 469.05
Haydn Deck	C-4	\$ 2,755.00	15%	\$ 413.25

**BE SURE TO BOOK SOON! YOUR EARLY BOOKING DISCOUNT**

*Is only available if you book BEFORE Nov. 30, 2024*

*\$500 deposit per person is required to reserve your place  
and assign your cabin*

Contact your TOUR LEADER.. They will put you in contact with

**Barb Kalemba @ Amadeus River Cruise Company in Chicago, IL.**

Barb handles all our bookings, cabin assignments and receives your payments via secure online links for credit card payments or via bank check.

BARB KALEMBA: [barb@amadeus-rivercruises.com](mailto:barb@amadeus-rivercruises.com)

Amadeus Phone: **+1 (844) 462-6727**

Shore Excursions – prices apply if reserved and paid for prior to departure

\*\* Prices per person are in Euros if purchased onboard ship

Excursions include interpreter guide and in some cases Coach Transportation

---

City Tour of Budapest with Matthias Church And Fisherman's Bastion	\$53
Excursion to Szentendre and Esztergom	\$69
City Tour of Bratislava (Slovakia)	\$53
Visit of the Imperial Festival Palace Castle Hof (Vienna)	\$79
City Tour of Venna	\$54
Guided tour of Schonbrunn Palace (Vienna)	\$79
Evening champagne concert – "Sound of Vienna" In the hall that Mozart built for his own city concerts	\$85
City walk – Durnstein, with wine tasting	TBA
Excursion to Melk Abbey	\$72
Linz walking tour with Linzer Torte tasting	\$49
Full-day excursion to Salzburg with Salzkammergut, Includes lunch	\$146
Trip to Poestlingsberg	TBA
Passau walking tour and history	\$29
Veste Oberhaus with visit to the museum	TBA